

# PRE SCHOOL ENGLISH WORKSHEET

Q.1 WRITE A-Z

The worksheet features a grid for handwriting practice. It consists of 10 horizontal rows. Each row is defined by three lines: a top red line, a middle blue line, and a bottom red line. A vertical red line is positioned on the left side of the grid. On the top red line of each row, there are four red dots, which are intended to be the starting points for writing the letters of the alphabet from A to Z.

Q.2. MATCH ALPHABET TO ALPHABET-

A

F

Z

A

F

Z

M

J

J

K

K

M

N

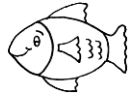
P

P

N

Q.3. MATCH ALPHABET TO PICTURE-

B



F



H



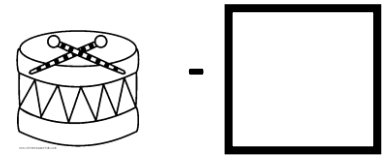
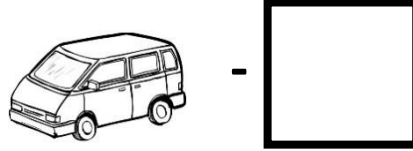
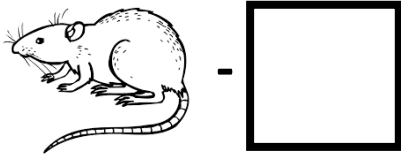
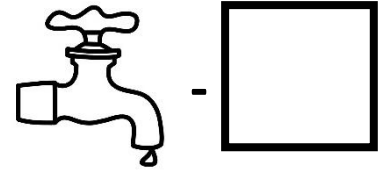
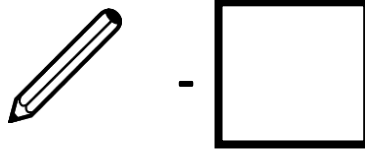
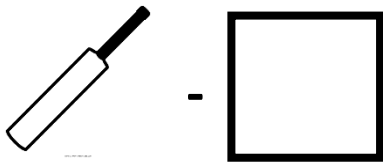
L





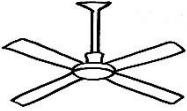
Y



Q.4. WRITE FIRST ALPHABET OF PICTURE-



Q.5. RING THE FIRST ALPHABET OF PICTURE-

	<b>U</b>	<b>X</b>	<b>V</b>
	<b>M</b>	<b>N</b>	<b>O</b>
	<b>J</b>	<b>N</b>	<b>F</b>

Q.6. WRITE MISSING ALPHABETS-

A  C

E F  H

I  K

M   P

Q  S T

U V  X

Y

Q.7. DICTATION-

The image shows a handwriting practice sheet with five sets of horizontal lines. Each set consists of a top red line, two middle blue lines, and a bottom red line. A vertical red line is on the left side. Each set has a red dot on the top red line as a starting point for writing.